



# SEQ TRAIL SERIES

**RUNNER'S GUIDE**  
SEASON 13, ROUND 7  
@ EWEN MADDOCK  
SUNDAY 1ST MAR 2026



**VERSION 1**

Updated 13/02/2026

# CONTENTS

WELCOME .....	P 04
EVENT LOCATION AND PARKING .....	P 04
PARTICIPANT SAFETY .....	P 05
EVENT DAY PROGRAM .....	P 06
COURSE MAPS AND PROFILES .....	P 06
COURSE MARKING .....	P 07
PARTICIPANT EXPECTATIONS .....	P 08
BIBS & MERCHANDISE .....	P 09
TIMING & PHOTOS .....	P 09
EVENT PRECINCT .....	P 10
CHARITY BBQ .....	P 10
STILL GOT QUESTIONS? CONTACT US! .....	P 10

SUPPORTED BY





**the trail co.**

TRAIL RUNNING SPECIALISTS



**SEQS**  
TRAIL  
SERIES

**VIP OFFER**

**SAVE 10% OFF\* RRP**

IN STORE AND ONLINE AT THE TRAIL CO.

REDEEM IN STORE WITH YOUR RACE BIB  
OR ONLINE AT [WWW.THETRAIL.CO](http://WWW.THETRAIL.CO)  
WITH CODE **SEQS13RUN**

78 MACGREGOR TERRACE, BARDON QLD 4065  
SHOP 14 / 655 TOOHEY RD, SALISBURY QLD 4107



\*TERMS AT: [WWW.THETRAIL.CO/PAGES/SEQTRSDEAL](http://WWW.THETRAIL.CO/PAGES/SEQTRSDEAL)

# WELCOME

Thanks for signing up to join us at the South East Queensland Trail Running Series.

We can't wait to share the beautiful trails of the Gold Coast, Sunshine Coast and Brisbane with you again in Season 13.

We would like to acknowledge the traditional custodians of the lands upon which each of our events take place and pay our respects to their Elders past and present. We also thank the current owners, land managers and local residents for allowing us to visit each year. Please remember that we are guests of the land areas on which the events are held and we ask particularly for your responsible actions regarding parking, use of facilities and rubbish removal from the event area.

Please make sure that you thoroughly read through the following, even if you have participated in the SEQ Trail Series before, as it contains all the information you'll need to ensure the day runs smoothly.

See you all out there soon!

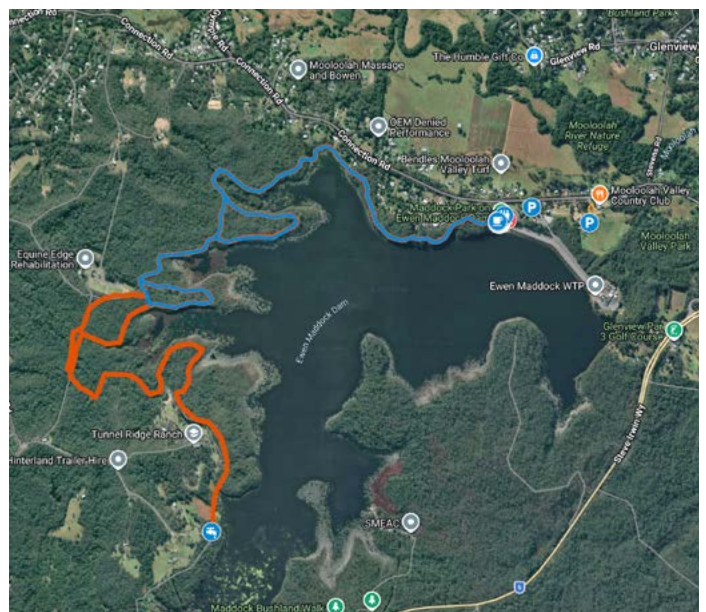
*Andreas and the Those Guys Events team*



# EVENT LOCATION AND PARKING

The event will be staged out of the **Maddock Park, on Ewen Maddock Dam**. Car-parking will be available at the locations marked on the [event map](#) only. Parking is limited so please make a concerted effort to carpool with fellow runners.

If parking along the public road, ensure you do so legally, safely and respectfully to the local residents.



## PARTICIPANT SAFETY

We have taken considerable care in event planning to ensure that the events are safe and enjoyable. There are a few key points that you need to be aware of:

- There will be First Aid located in the event precinct if you feel unwell or sustain an injury at any time.
- All runners under 12 years of age must be directly supervised for the duration of the run – that is, a parent or guardian must run with the child for the entire distance, and they too must be entered in the same event.
- If, after starting the event, you withdraw for any reason, notify us immediately so that we don't launch a search for you.
- Do not run under another runner's bib in any circumstances. This is especially irresponsible for trail running where any rescue efforts would be greatly hindered if you were to become lost or ill while alone in the bush.



## MANDATORY REQUIREMENT:

**Both short and long course participants must carry a bottle or hydration pack capable of holding a minimum of 500mL fluids. Event organisers reserve the right to prevent your participation if you do not meet this requirement.**

## ALL SEQ EVENTS ARE CUP-FREE

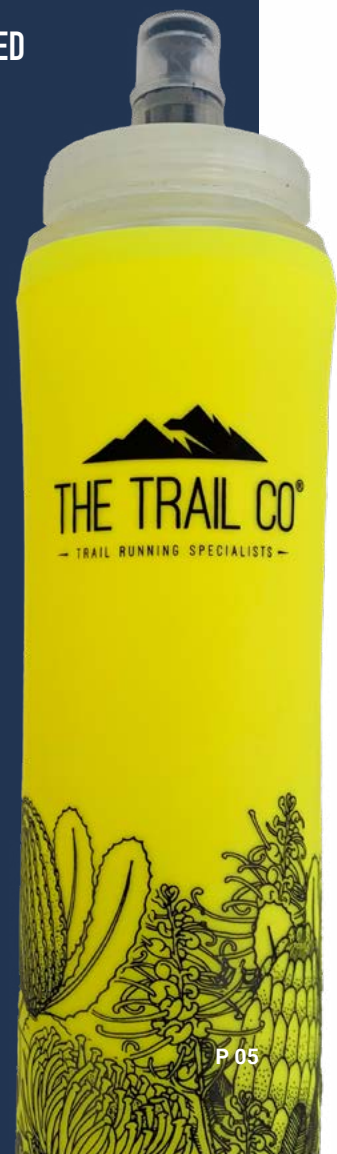


THERE ARE NO ON-COURSE  
WATER STATIONS AT THIS EVENT.

RUNNERS ARE REQUIRED  
TO CARRY THEIR  
OWN SUPPLIES.

There will be a water refill station available at the start/finish area for filling up your own bottles prior to the events. Fixx Nutrition will also be available for runners at the completion of the events.

\*\*\* Some events in the Series will be run on more challenging courses and in warmer weather, and these events will have different rules regarding carrying supplies. Please ensure you read this section in the Participant Information Guide carefully FOR EACH INDIVIDUAL EVENT \*\*\*



## EVENT DAY PROGRAM

Time	What	Location
5:20am – 6:10am	Bib collection	
6:20am	Compulsory event briefing	Event Precinct ( <a href="#">map</a> <a href="#">🗉</a> )
6:30am	Long Course starts	
6:40am	Short Course starts	
From 8:00am	Presentations and prizes	

There are no cut-off times, and all runners are encouraged to complete the course at their own pace.

Presentations will commence once the majority of runners have finished. Event winners will be awarded medals, followed by a random prize draw with giveaways from our sponsors (participants must be present to claim prizes).

After your run, the Trail Trekkers will be firing up the BBQ for a friendly sausage sizzle. We will also have Minnie's Espresso pouring fresh coffee, and The Trail Co. setting up their tent stocked with trail favourites. Bring some cash - just in case!

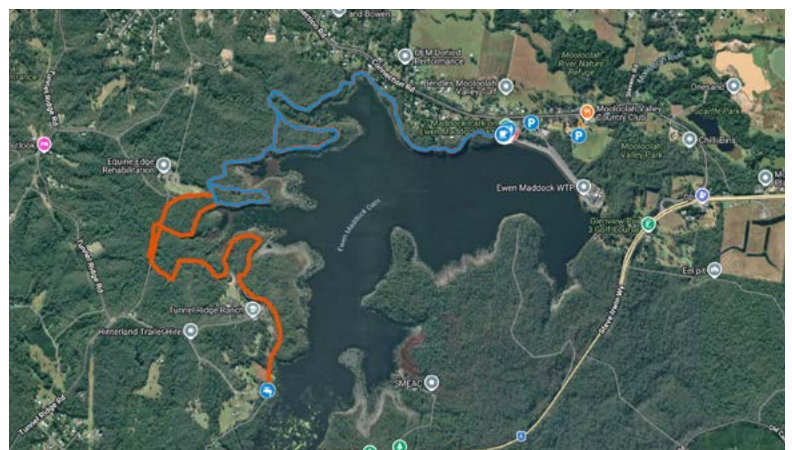
## COURSE MAPS AND PROFILES

Course maps for each run can be viewed from the event website at the links below.

**RD7: EVENT PAGE** [🔗](#)

**RD7: LONG COURSE** [🔗](#)

**RD7: SHORT COURSE** [🔗](#)

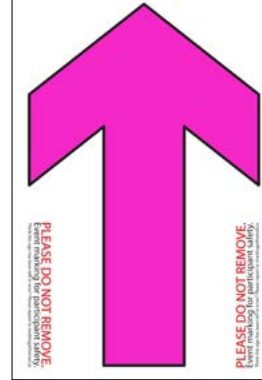


## COURSE MARKING

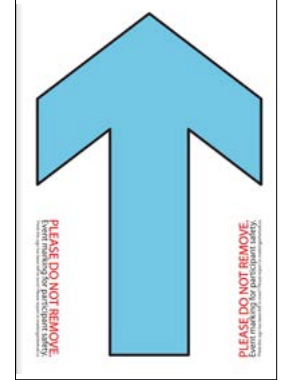
The South East Queensland Trail Running Series presented by Those Guys Events will be quite different to a road running event in that you will be required to keep an eye out for course markings as follows:

- The course will be marked with yellow and pink reflective tape, pegged to trees and bushes.
- Arrows and crosses will complement the flagging tape at junctions.
- Track markings on sections where there are no route options or intersections may be spread out and irregular.
- Unless otherwise marked or directed, participants should follow the most major track at all intersections. If there is no marking at a minor track junction then continue along the major track.
- Runners should keep to the left-most-side of all trails. The etiquette is the same as that when driving on the road.

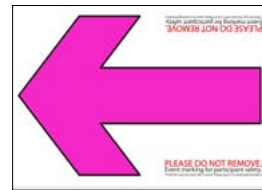
## COMMON DIRECTION SIGNS



**Straight  
(Long Course)**



**Straight  
(Short Course)**

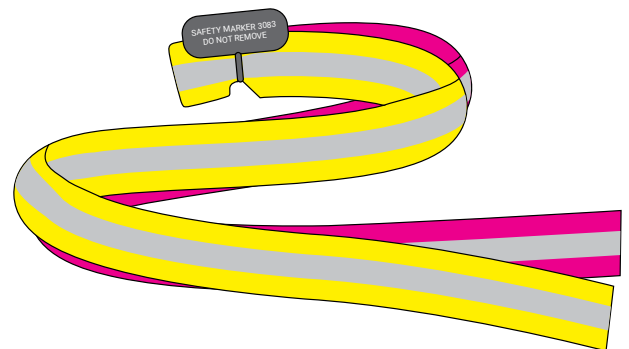


**Left**



**Do NOT Follow**

## THOSE GUYS EVENTS REUSABLE TRAIL MARKING

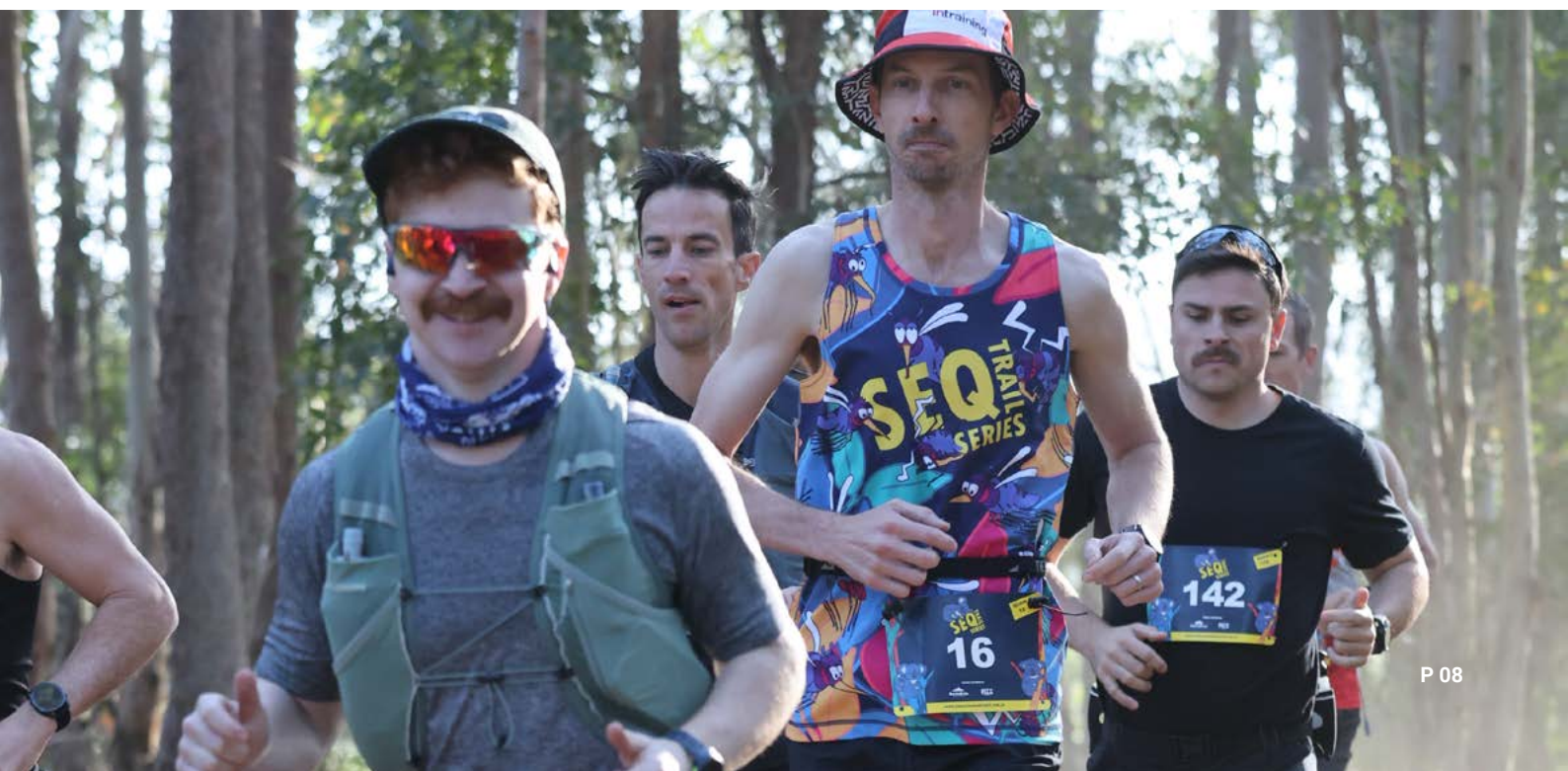


All flagging is reflective **YELLOW + PINK** webbing

## PARTICIPANT EXPECTATIONS

**We expect that participants in the South East Queensland Trail Running Series presented by Those Guys Events, will be mindful of the fact that we are guests of the land area on which the events are run, and we particularly note the following:**

- Participants found littering or vandalising any section of the course will be disqualified from the event.
- Participants are to remain on the marked course at all times. Do not trespass on neighbouring properties or bushland.
- Participants and spectators must drive to and from the event safely and be considerate of where they park. Do not park or drive on private premises.
- Please be considerate of residents in surrounding areas and keep noise at a minimum when arriving at and leaving the event.
- Do not wear headphones during the event. With hundreds of runners converging on the trail network, we need you to be able to hear each other, instructions from marshals and vehicles, bikes or members of the public.
- All tracks remain open to the public so please be considerate of all other park users that you encounter.
- Dogs are not permitted to run in any of the SEQ Trail Series events.



## BIBS & MERCHANDISE

Event day and series bibs will be available for collection at the event precinct from 5:20am – 6:10am.

Bibs must be worn on your front and be visible to get a time.

Any event singlets that have been pre-ordered for event day pick-up will be at bib collection.



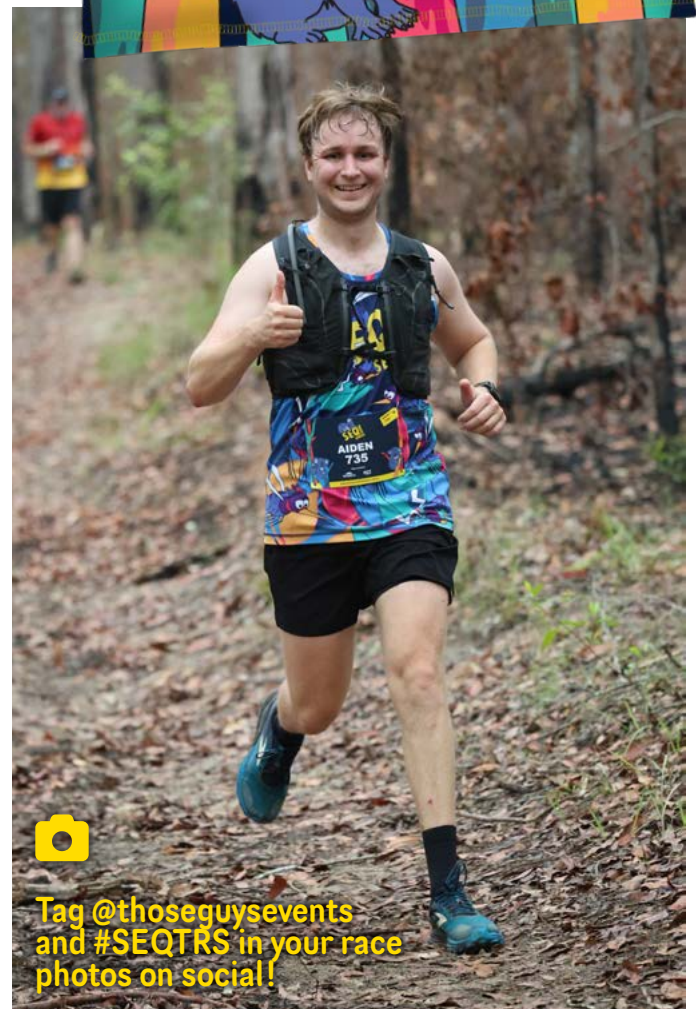
### DON'T FORGET YOUR PERSONALISED BIB!

In an effort to reduce our environmental impact, we try to re-use as many bibs as possible. If you were issued with a personalised bib, please keep it safe and bring it back to each event you attend.

### RETURN YOUR SINGLE EVENT BIB

If your bib is not personalised, you can return it to race HQ after the event so that we can re-use it. You will need to collect a new one at each event you attend.

We'll save well over 3000 bibs from landfill this way!



Tag @thoseguysevents and #SEQTRS in your race photos on social!

## TIMING & PHOTOS

The event will be timed and official results will be published at [www.seqtrailrunningseries.com.au/results-photos/](http://www.seqtrailrunningseries.com.au/results-photos/) as soon as possible on the Sunday afternoon.

Photos from the event will also be made available and links will be on the results page of the website, and via your personal race result, when they are ready for viewing and purchase.

## EVENT PRECINCT

Toilets and refreshments will be available in the event precinct. Participants are encouraged to use these toilets before the event, as there will be **no toilets on the course**. Please leave plenty of time for this.

Make sure to hang around after you finish to help us cheer. Minnie's espresso will be serving coffee and The Trail Co. tent will be stocked with running goodies for you to browse. We'll also have some more great random prizes to give away during presentations.

All participants and spectators are encouraged to pull up a seat, warm up your voices and cheer loudly until every runner has made it home across the line.

Maddock Park is a lovely place to spend a few hours, with swimming in the dam also available, so bring the family along and make the most of your Sunday morning.

---

## CHARITY BBQ

After your run, the Trail Trekkers will be firing up the BBQ for a friendly sausage sizzle.

Bring some cash - just in case EFTPOS is not available.

---

## STILL GOT QUESTIONS?

## CONTACT US!

If we haven't answered your pressing question in this guide in our [FAQs](#) or elsewhere on [our website](#), shoot us a [message here](#) or email us at [hello@thoseguyssevents.com.au](mailto:hello@thoseguyssevents.com.au)

Please note: the last couple of days before each event are very busy with course marking and other preparations and we may not be able to reply to you before Sunday. Rest assured, most important answers can be found in this guide or [online](#).

